



maars LIVING WALLS®

styleline

aesthetics with efficiency

At Maars, we are always looking for ways to improve the environment and create workplaces where people feel comfortable and perform in the best possible way. That is why we came up with the idea of Living Walls.

An inspiring concept of remountable, integrated wall solutions for healthcare, office buildings, airports, education, hospitality, industry and retail, among others.

The most visionary architects worldwide choose Living Walls. They have seen us as the supplier of innovative wall solutions for over 75 years. Solutions that contribute to the productivity and well-being of employees as well as being distinctive due to their sustainable and circular nature.

In this way, we want to surprise and inspire people. By providing a unique visual experience, optimal comfort, well-being, security and privacy. Sustainable, environmentally-friendly and with Cradle to Cradle certification.

Welcome to the world of Maars!

■ maarslivingwalls.com

styleline



Styleline partitions combine functionality and style in an economical way. This cost-effective solutions does not make any sacrifices in terms of quality. Maars products are manufactured with the highest quality products and production techniques.



functional in style



remountable

Sustainability and circularity are in the center of Maars Living Walls design. We create products that are designed to excel in modular construction and re-use as a standard practice. The ability to reuse our products is both good for the environment and also the flexibility of your space.

The key sustainability features of Styleline:

- All materials are individually recyclable
- No adhesives or use of harmful substances
- Always easy to adjust in width with fitting panels





endless variations

Discover the wide range of options offered by Styleline; the first system wall developed by Maars, which consists of different partitions and modules and has a unique look and feel. Innovative at the time, a timeless design today. Based on more than 75 years of international knowledge and experience, we will help you realise every conceivable design idea with Styleline.

Styleline offers endless variations in finishes, such as glass, closed gypsum wall or melamine finish. Acoustic and fire resistance features are also available as required. In this way, together we can provide customised, functional and aesthetic quality solutions for spaces where it is pleasant to work and spend time.

versatility





adaptable and affordable

Maars' Styleline is one of the most widely used wall solutions in Europe. No other system that can be so easily and flexibly adapted to the wishes and requirements of designers and users. Regardless of the structural situation and the available budget. Versatility in all respects down to the last square centimetre.



for every project



The combination of craftsmanship, and versatility found in Styleline cannot be taken for granted. This is due in part to perfect process control and the in-house powder coating facility to provide all visible metal parts with a durable and attractive coating. Styleline offers a multitude of materials, colours and designs and can be combined with a wide range of doors.

perfect finish





features & benefits

- Very cost-effective
- Versatile use of materials
- Efficient mounting options
- Cradle to Cradle Bronze certification
- Timeless design
- Rw up to 47 dB / 47 STC



Comprehensive ground profile

Vertical and Horizontal configuration possible



Versatile use of materials

Possible wall thicknesses
82 mm / 3 1/4" or 107mm / 4 1/4"



exclusive extras

If the budget allows, Styleline can also be customised. By working with special types of glass, veneers or designer door fittings, for example, you can add even more character to your design and create an exclusive look. We are happy to advise you on the options for creating a unique project.



timeless solutions

Styleline is flexible, economically appealing and extremely versatile. Styleline wall solutions can be found at many locations and in many forms. Such as in healthcare, office buildings, airports, education, hospitality, industry and retail.



committed to circularity

For Maars, the well-being of people in any space is essential. We are always looking for sustainable, responsible solutions and we are constantly researching new production techniques. Reduce, reuse and recycle are firmly rooted in our business philosophy: from eco-friendly coatings to CO₂ offsets and the 5S 'lean manufacturing' methodology. Our products help improve your BREEAM and LEED scores. We have established an integrated operational management system for all critical quality, environmental and safety processes in order to have full control over our quality, environmental and health & safety policies. By scrutinising the entire production process, we can be more efficient in terms of production while reducing energy consumption. Maars' ongoing commitment to innovation and circularity has been recognised with a Cradle to Cradle Bronze certificate for all our wall systems and ISO-9001 / ISO-14001 certification. (Be sure to ask about our certified products.)



styleline

create and design interiors beyond your imagination

Maars 4D provides you with intelligent, highly visual and intuitive space planning software to make specifying and selling products easier. Maars 4D enables you to create realistic visualisations, including a moving fly through of your future space. This allows you to provide your customer a unique experience before you have even started the installation.

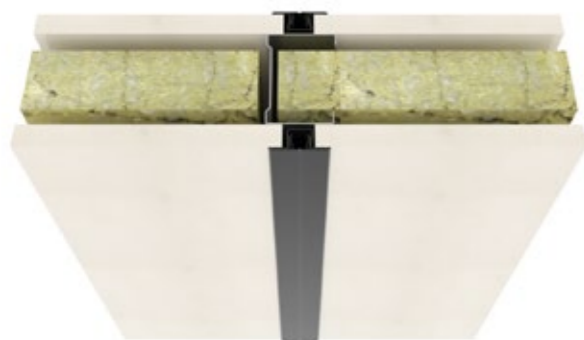


Rendered with maars 4D software

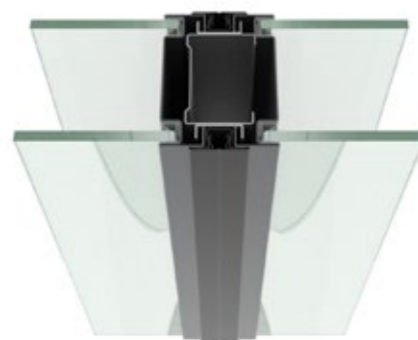


visit www.maarslivingwalls.com to learn the possibilities

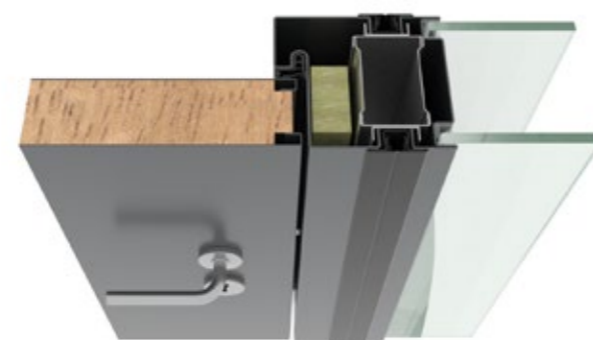
great performance, unique details



Connection between gypsum panels with c-studs and omega profile



Connection between two steel window frames with c-studs and omega profile



Functional whole due to combination of steel window frames, steel door frame and steel door

technical specifications

DESCRIPTION

Demountable system wall with clad gypsum and/or chipboard panels.

CONSTRUCTION

Wall thickness: 82 – 107 mm / 3 1/4" - 4 1/4"
Shade connections floor / ceiling made of galvanised steel profiles.
C-studs made of galvanised steel.
All modular couplings by means of galvanised steel omega profiles.
Both vertical and horizontal partitions possible.

CLOSED MODULES

12.5 mm / 1/2" clad gypsum panels.
12.5 mm / 1/2" chipboard with melamine, HPL or veneer top layer

DOOR MODULES

Door frames: Steel or aluminium
Wide range of 40 mm / 1 5/8" or 82 mm / 3 1/4" thick doors.

GLAZED MODULES

Single-glazed or double-glazed elements in mono-block design with steel or aluminium frame; glass thicknesses 4 mm / 1/8", 6 mm / 1/4" or 8 mm / 5/16", possible.

STANDARD SIZES

Height 3,000 mm / 9' 10 1/8"
Width 900 mm / 1,200 mm / 2' 11 7/16" / 3' 11 1/4"

Weight approx.

- Closed 25 kg/m²
- Glass 40 kg/m²

FINISHES

- Surface treatment
 - Visible metal parts: environmentally friendly epoxy powder coating, layer thickness approx. 80 mu. Based on the standard Maars colours. Other colours in consultation.
 - Extensive range of finishes in fabric, HPL, veneer available.

• Glazing

- Several different options are possible, such as acoustic laminated, coated, privacy glass or sandblasted.

• Module coupling

- Sprayed omega with PVC inlay piping
- Galvanised omega with painted steel cover profile
- Galvanised omega with PVC cover profile

INSTALLATION TOLERANCES

Floor +/- 10 mm / 3/8"
Ceiling +/- 10 mm / 3/8"
Integration of Electricity and Data cables
Perforated C-pillars allow wiring to be incorporated into the wall. Removable panels make the wall easily accessible for subsequent changes.

SOUND

Weighted sound insulation index in accordance with EN ISO 717-1
Closed modules: up to RW 47 dB / 47 STC
Glazed modules: up to RW 44 dB / 44 STC
Door module closed: up to RW 37 dB / 37 STC
Door module glazed: up to RW 35 dB / 35 STC

FIRE

Fire resistance in accordance with EN 1363-2, EN1364-1 and EN 1634-1.
Closed: up to EI 60
Glazed: up to EI30
Door: up to EI30

LIVING OPTIONS

Maars offers a wide range of options that can be integrated into our wall system, depending on the wall type. Ventilation styles, sound panels, cabinets, shelf supports, climate control panels, dynamic light, multimedia, fabric covered panels, privacy glass or Maars Magnetics. Ask your Sales Project Manager about our total product range.



maars LIVING WALLS®

Newtonweg 1, PO Box 1000
3840 BA Harderwijk
The Netherlands

T +31 (0)341 46 52 11
info@maars.nl
www.maarslivingwalls.com

products

Styleline	lineaCube
Metaline	Doors
String ²	Living Options
Panorama	M923.
Horizon	Core
lalinea	

expertise

Office	Airport
Care & Cure	Hospitality
Education	Industrial
Revitalisation	Automotive