



maars LIVING WALLS®

panorama

transparency and flexibility at its best

At Maars, we are always looking for ways to improve the environment and create workplaces where people feel comfortable and perform in the best possible way. That is why we came up with the idea of Living Walls.

An inspiring concept of remountable, integrated wall solutions for healthcare, office buildings, airports, education, hospitality, industry and retail, among others.

The most visionary architects worldwide choose Living Walls. They have seen us as the supplier of innovative wall solutions for over 75 years. Solutions that contribute to the productivity and well-being of employees as well as being distinctive due to their sustainable and circular nature.

In this way, we want to surprise and inspire people. By providing a unique visual experience, optimal comfort, well-being, security and privacy. Sustainable, environmentally-friendly and with Cradle to Cradle certification.

Welcome to the world of Maars!

■ maarslivingwalls.com

panorama



Maximum transparency, performance and flexibility come together intelligently in a state-of-the-art wall system called Panorama. If you want even tighter lines and even higher acoustic performance, discover Panorama's slim tracks. No matter what choice you make, you are always opting for eye-catching design. Make the most of the grandeur and expansiveness of your space with Panorama.

panorama view





remountable

panorama

Sustainability and circularity are in the center of Maars Living Walls design. We create products that are designed to excel in modular construction and re-use as a standard practice. The ability to reuse our products is both good for the environment and also the flexibility of your space.

The key sustainability features of Panorama:

- Completely remountable
- Raw materials are fully recyclable and reusable without loss of quality
- No adhesives or use of harmful substances

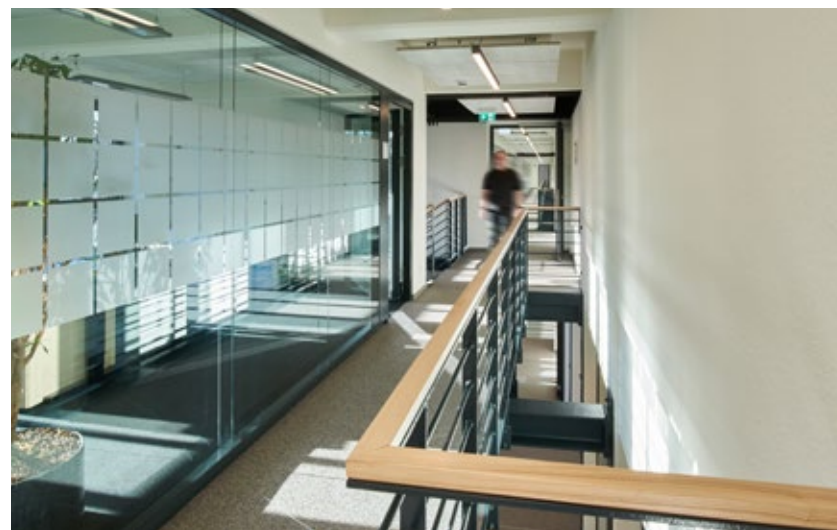


future proof

Future-proof building means focusing on sustainability and circularity. Maars' Panorama connects seamlessly to this thanks to its hyper flexibility. All parts can be dismantled and reused without any problems. By including tolerances, Panorama walls are easy to move.

flexibility





communicate & work together

Hybrid working is the new norm. An open and transparent work environment promotes contact between employees and ensures better teamwork. Transparency also contributes to employee well-being and productivity by providing more daylight. In addition, visual privacy is important for people's well-being. Therefore, combine Panorama with a closed wall system, such as String² or Metaline.





The double-glazed Panorama Slim Tracks system walls allow you to achieve maximum transparency in the interior due to the absence of profiles. The minimalist design of this system creates a super sleek and seamless whole combined with excellent functional performance. No matter what layout you choose, everything is easy to implement and adapt later with a minimum of components. Sustainable and permanently flexible!

transparency

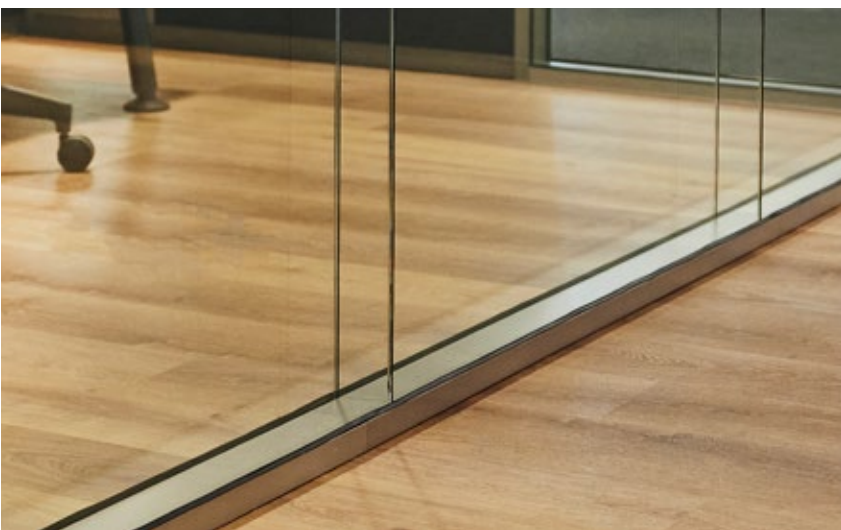


Transparency is synonymous with right angles. Panorama also allows you to enrich an interior design with curved transparent walls. We offer you considerable design versatility.

panorama



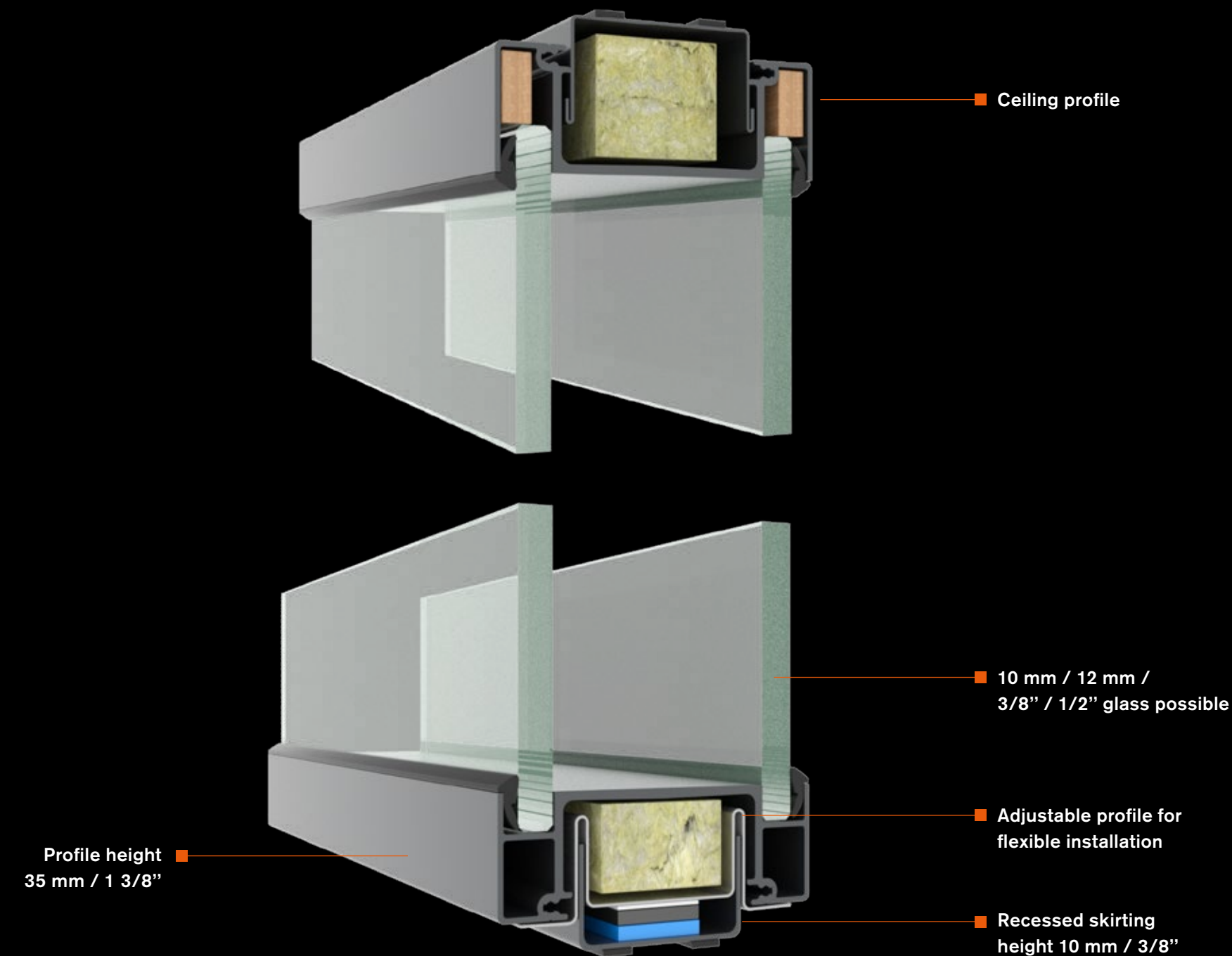
15/24



features & benefits

Making the coupling of the glass panels invisible creates a transparent whole. Panorama can be connected in two ways: without using other materials or with extremely thin, barely visible glass tape to connect polished cut glass.

- No vertical profiles
- Fully-glazed corners
- Minimalist profiles with the option of including tolerances
- Fully remountable; sustainable and circular
- Cradle to Cradle Silver certification
- Sound insulation up to 50 dB / 51 STC



new dimensions

Panorama can be found at many locations and in many forms. The sustainable Panorama wall solutions open up new dimensions in healthcare, office buildings, airports, education, hospitality, industry and retail.



committed to circularity

For Maars, the well-being of people in any space is essential. We are always looking for sustainable, responsible solutions and we are constantly researching new production techniques. Reduce, reuse and recycle are firmly rooted in our business philosophy: from eco-friendly coatings to CO₂ offsets and the 5S 'lean manufacturing' methodology. Our products help improve your BREEAM and LEED scores. We have established an integrated operational management system for all critical quality, environmental and safety processes in order to have full control over our quality, environmental and health & safety policies. By scrutinising the entire production process, we can be more efficient in terms of production while reducing energy consumption. Maars' ongoing commitment to innovation and circularity has been recognised with a Cradle to Cradle Bronze certificate for all our wall systems and ISO-9001 / ISO-14001 certification. (Be sure to ask about our certified products.)



panorama

create and design interiors beyond your imagination

Maars 4D provides you with intelligent, highly visual and intuitive space planning software to make specifying and selling products easier. Maars 4D enables you to create realistic visualisations, including a moving fly through of your future space. This allows you to provide your customer a unique experience before you have even started the installation.



visit www.maarslivingwalls.com to learn the possibilities

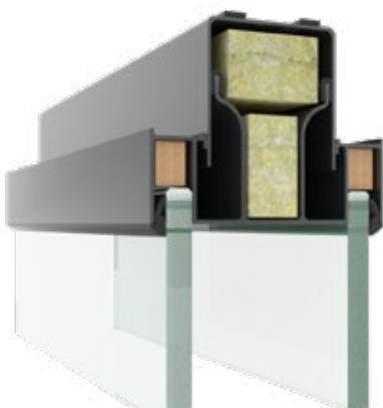
great performance, unique details



Continuous whole through connection to String² door frame with Flush glass door



Slim profile with recessed skirting board of 10 mm / 3/8"



Ceiling Detail



Recessed skirting of 40 mm / 1 5/8"

technical specifications

DESCRIPTION
Demountable double glass system wall

CONSTRUCTION
Wall thickness: 100 mm / 3 15/16"
Connections floor / ceiling 1.5 mm / 1/16"
galvanised steel profiles
Vertical partitions are possible
Glazed Modules
Without intermediate vertical profiles.
Double-glazing with 10 mm / 12 mm / 3/8" / 1/2" glass

Panorama can be seamlessly coupled with String² for closed modules.

DOOR MODULES
Door frames: Steel or aluminium
Wide range of doors in 40 mm / 1 5/8" or 100 mm / 3 15/16" thickness.

STANDARD SIZES
Height 3,400 mm / 11' 1 7/8"
Width 900 / 1,200 mm / 2' 11 7/16" / 3' 11 1/4"
Nominal skirting height
• 10 – 40 mm / 3/8" - 1 5/8" Ceiling
• 10 – 100 mm / 3/8" - 2 3/8" Floor
Weight approx. 55kg/m², with 2x 12 mm / 15/32"

FINISHES
• Glazing
- Several different options are possible, such as acoustic laminated, coated, privacy glass or sandblasted.

INSTALLATION TOLERANCES
Floor +/- 13 mm / 1/2"
Ceiling +/- 13 mm / 1/62"

Skirting height 10 mm / 3/8" has limited tolerance field.

SOUND
Weighted sound insulation index in accordance with EN ISO 717-1
Glazed modules: up to RW 50 dB / 51 STC
Glazed door modules: up to RW 41 dB / 41 STC

LIVING OPTIONS
Maars offers a wide range of options that can be integrated into our wall system, depending on the wall type. Ventilation studs, sound panels, cabinets, shelf supports, climate control panels, dynamic light, multimedia, fabric covered panels, privacy glass or Maars Magnetics. Ask your Sales Project Manager about our total product range.

products

Styleline	lineaCube
Metaline	Doors
String ²	Living Options
Panorama	M923.
Horizon	Core
lalinea	

expertise

Office	Airport
Care & Cure	Hospitality
Education	Industrial
Revitalisation	Automotive



maars LIVING WALLS®

Newtonweg 1, PO Box 1000
3840 BA Harderwijk
The Netherlands

T +31 (0)341 46 52 11
info@maars.nl
www.maarslivingwalls.com