



maars LIVING WALLS®

metaline

minimum thickness
with maximum values

rapid assembly and
unique flexibility



Welcome to the world of Maars! Established in 1946, Maars is currently global market leader in modular wall solutions, supported by our dedicated employees. We offer the most innovative integrated wall solutions covering markets such as healthcare, offices, airports, education, hospitality, industry and retail.

Ongoing product development and specialization is based on growing insights and worldwide collaborations with dealer partners, customers and architects. The result: a wide range of solutions spanning basic to high-end design, that meet certified fire ratings and acoustic performance benchmarks.

Maars Living Walls shows how our solutions enable you to be one with your environment, thanks to smart integration of all the latest technologies, materials and functions. Get inspired – discover more about Maars, our solutions and global capabilities in this brochure.



visual & acoustic privacy

Transparency and open space design are trending in interiors. However, experience learns that visual and acoustic privacy becomes an issue more and more in these surroundings. Confidential meetings and phone calls ask for concentration, silence and privacy. Create privacy offices with the steel wall partitions of Metaline.





aesthetic

metaline

Maars has put all its creativity and inventiveness into making optimal use of the versatile qualities of steel. Just how well Maars has succeeded in doing so has been proven amply by the global success of its Metaline steel partition wall range. Metaline distinguishes itself through ingenious construction combined with a sleek and slim design.

The patented click system offers unprecedented, quick assembly and unique adaptability. Metaline's versatility lies in its aesthetic finishes as well as the ability to integrate special features. This range consists of a wide selection of magnetic coat hooks, picture hooks, document holders, name plates and many other smart magnetic solutions.

- versatile
- design
- adaptability





ingenious

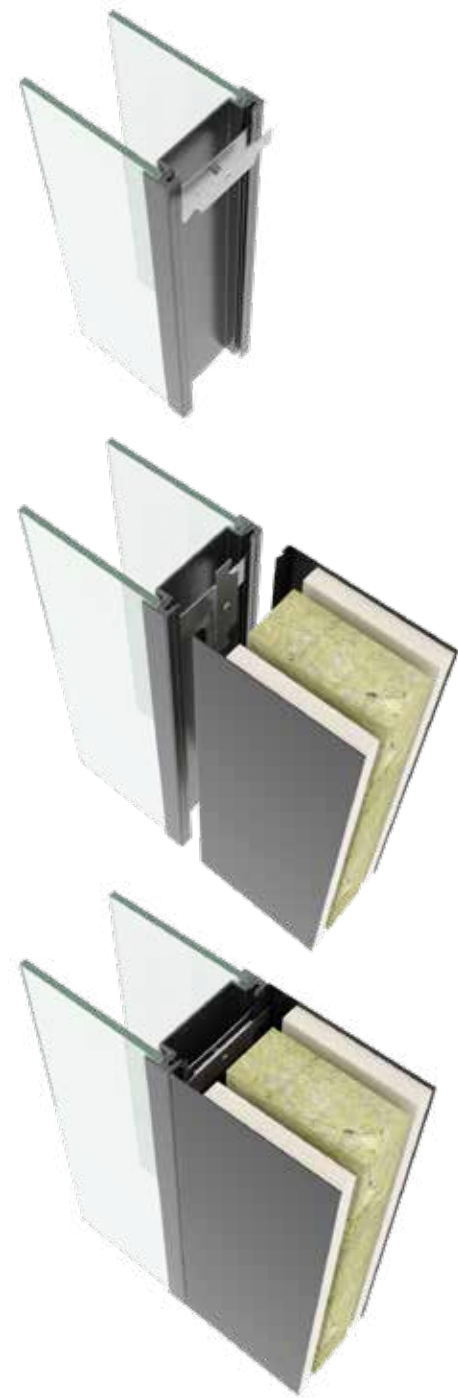
metaline

features and benefits

Steel walls have many advantages for interior design. Starting with impressive acoustic performance and fire resistancy. The steel wall can also be used as an alternative to drywall.

- sound insulation up to 53dB
- fire resistance up to EI 60
- burning behavior: A2 – S1, D0
- durable, 90% recyclable
- magnetic
- hygienic





twist and click

Thanks to the patented twist-and-click principle of the Maars Metaline wall, significant time savings can be achieved in assembly. All wall, glass and door elements can be quickly and easily assembled into a very stable partition wall. Metaline walls also occupy less space than a standard partition wall, thanks to the special design and slim dimensions. With Maars Metaline you are automatically set up for the greatest possible flexibility in the future. Changing, moving or expanding the system is also simply a matter of twist-and-click.

metaline

maximum values

Seamless connections
to glass partitions

Thickness of 82 up to 100 mm
(3"- 1/4 up to 3" - 15/16)

Height up to 3500 mm
(137" - 13/16)

Joints 0 mm



functional

Metaline not only offers the highest functionality – the unique steel modular wall solutions also excel when it comes to versatility. They are often found in healthcare and cleanroom applications, as the steel walls are airtight, easy to keep clean and not easily damaged. What's more, a variety of installations can be incorporated into the walls, out of sight, and windows or luminaires can be integrated wherever you want them. In this way, Metaline offers maximum design freedom.

- health & care
- cleanrooms
- laboratoria





durable and timeless

Sustainable design means a commitment to reusability. No problem at all with Metaline modular wall solutions. These can be installed quickly and used over and over again. They will maintain their appearance for years because they are easy to clean and not scratch-sensitive. And when it's time to refresh your interior design, you can easily re-upholster the wall panels with fabric, felt or veneer. In this way, you can easily and sustainably create a completely different look.

revitalization



endless flexibility

metaline



Our steel product lines Metaline providing you with endless options in steel walls combined with high performances.



17/24



versatility

choose the
maximum

To Maars, the welfare of people in any space is essential. We're always looking for sustainable, responsible solutions and examining new production techniques. Reducing, reusing and recycling are rooted in our company philosophy: from environmentally-friendly coatings, to CO2 compensation and 5S 'lean manufacturing'. Our products help boost your BREEAM and LEED scores. To gain full control of our quality, environmental and health & safety policies, we have set up an integrated operational management system for all critical quality, environment and safety processes. By scrutinising the entire production process, we can produce more efficiently while reducing energy consumption. Maars' ongoing commitment to innovation and circularity has been recognised with a Cradle to Cradle™ Bronze certificate* for all our wall systems and ISO-9001 / ISO-14001 certification.



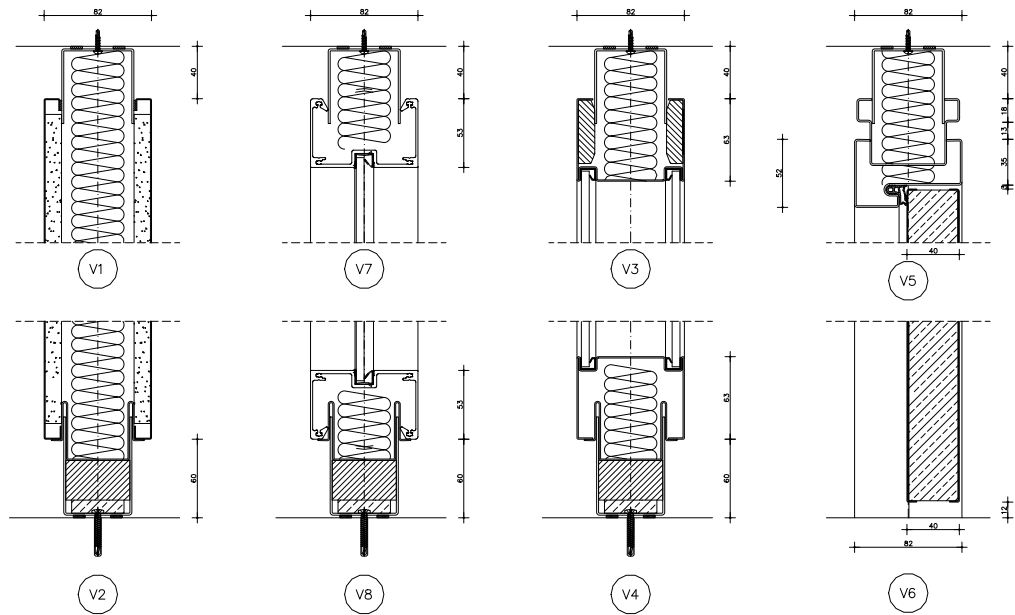
metaline



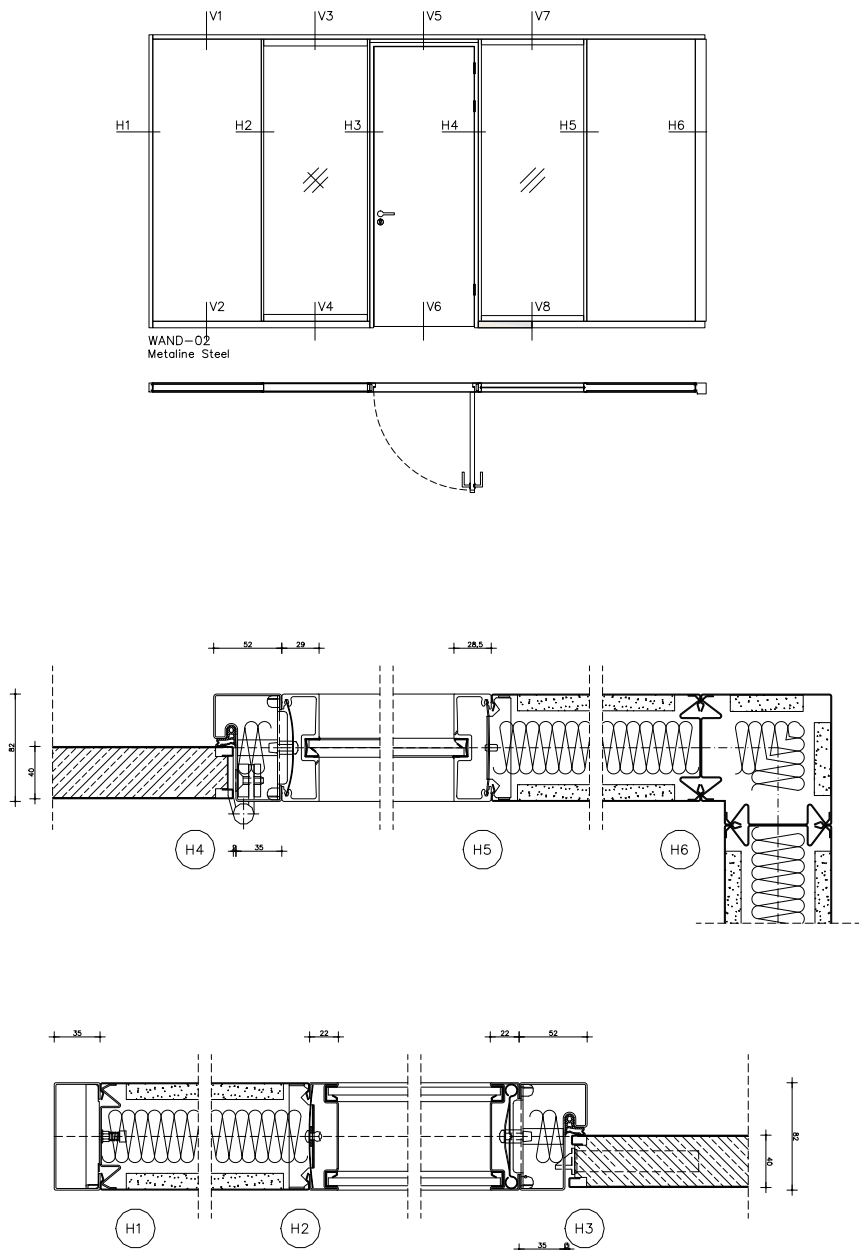
Maars 4D places intelligent, highly visual and intuitive room planning software at your disposal, making it easier to specify and sell products.

visit www.maarslivingwalls.com and learn the possibilities

technical drawing



metaline



technical specifications

DESCRIPTION
Demountable steel faced partition.

STRUCTURE

- **SOLID ELEMENTS:**
 - Thickness: 82 - 100 mm
 - Studs: steel sections, 2 x 0,8 mm clinched clamping stud
 - Panels: steel 0,8 mm on 12,5 mm plasterboard backing
 - Cavity: mineral wool
 - Floor and ceiling U-channels: 1,5 mm steel sections

- **GLAZED ELEMENTS:**
 - Double glazed panels in 4, 6 or 8 mm thickness in aluminium or steel sections
 - Integrated blinds possible

- **DOOR ELEMENTS:**
 - Doorframe: aluminium or steel frames provided with 3 hinges
 - Door leaves: Wide range of doors from 40 mm or 82 mm double glazed doors. Check our doors range for further options

Reveal
0 mm joint

FINISHES

- **SURFACE TREATMENT:** for all visible metal parts: environmental friendly epoxy powder coating approx. 80µ thickness.

- **COLORS:** according to Maars color chart. Other colors possible after consultation.

- **GLAZING:** a variety of options are available, such as sandblasting, film, painted glass. Other manifestations possible after consultation.

STANDARD DIMENSIONS

- Height: 3500 mm
- Width: solid panels 900/1200 mm, glass 900/1200 mm
Other sizes in height or width after consultation.
- Weight: 35 kg/m², solid elements

INSTALLATION

- **TOLERANCES:**
 - Floor: +/- 13 mm
 - Ceiling: +/- 13 mm
 - Adjustable floor track for easy adjusting of tolerances

- **CONNECTION:**
All elements are connected by using clamping studs; monoblock elements are connected through a patented “twist and click” connector, enabling easy installation and easy disassembly.

- **INTEGRATION OF ELECTRICAL AND DATA SERVICES**
Perforated clamping studs provide access for wiring and other services.

Demountable panelling provides easy access for servicing afterwards.

CLEANING
Please check our website for our cleaning and maintenance instructions.

ACOUSTICS 82 MM
Weighted sound reduction index to ASTM E 413-10 / ISO-717

- Solid steel:
up to Rw=48dB, STC=48
- Glass:
up to Rw=44dB, STC=44

Doors tested in doorframe:

- Steel door:
up to Rw=37dB, STC=37
- Flush steel door:
up to Rw=36dB, STC=36
- Flush glass door:
up to Rw=30dB, STC=30

FIRE RESISTANCE
Fire resistance to EN 13501-21.

- Solid up to EI 60
- Glazed up to EI 30
- Door up to EI 30

BURNING BEHAVIOR
solid elements:
A2 – S1, D0
index to:
NEN-EN3823 / NEN-EN ISO11925-2

ACOUSTICS 100 MM
Weighted sound reduction index to ASTM E 413-10 / ISO-717
Doors tested in doorframe:

- Steel door: up to Rw= 44dB, STC=44
- Flush glass door: up to Rw= 41dB, STC=41

Due to our policy of constant improvement our products are subject to change. Please check for the latest details: www.maarslivingwalls.com

LIVING OPTIONS
Maars offers a wide range of options which can be integrated in our partitioning systems, depending on the type of wall. Ventilation studs, sound panels, cupboards, shelving systems. White board Ventilation studs Sound Panels Cupboards shelving Dynamic lightning Panels clad with textile Privacy glass

products

Styleline	lalinea
Metaline	lineacube
String ²	Doors
Panorama	Living Options
Horizon	M923.

expertise

Office	Airport
Care & Cure	Hospitality
Education	Industrial
Revitalisation	Automotive



maars LIVING WALLS®

Newtonweg 1, PO Box 1000
3840 BA Harderwijk
The Netherlands

T +31 (0)341 46 52 11
info@maars.nl
www.maarslivingwalls.com