



maars LIVING WALLS®

# lineaCube®

the flexible room-in-room system

At Maars, we are always looking for ways to improve the environment and create workplaces where people feel comfortable and perform in the best possible way. That is why we came up with the idea of Living Walls.

An inspiring concept of remountable, integrated wall solutions for healthcare, office buildings, airports, education, hospitality, industry and retail, among others.

The most visionary architects worldwide choose Living Walls. They have seen us as the supplier of innovative wall solutions for over 75 years. Solutions that contribute to the productivity and well-being of employees as well as being distinctive due to their sustainable and circular nature.

In this way, we want to surprise and inspire people. By providing a unique visual experience, optimal comfort, well-being, security and privacy. Sustainable, environmentally-friendly and with Cradle to Cradle certification.

Welcome to the world of Maars!





# living walls

LineaCube is unique due to its fully self-supported construction and recessed ceiling. Its minimalist design creates a self-contained workspace with integrated ventilation, acoustic insulation, power, data, audio and lighting.

lineaCube





istic transparency



remountabl



Sustainability and circularity are in the center of Maars Living Walls design. We create products that are designed to excel in modular construction and reuse as a standard practice. The ability to reuse our products is both good for the environment and also the flexibility of your space

The key sustainability features of the lineaCube:

- Self-contained unit; can be flexibly placed in any other location
- Raw materials are fully recyclable and reusable without loss of quality
- No adhesives or use of harmful substances





impressive

lineaCube

# less is more, the art of leaving out

Modern interior design is characterized by openness and transparency. At the same time, there is a growing need for places where one can focus on work, make phone calls and hold meetings. The impressive lineaCube gives substance to this and offers acoustic privacy, thanks to good sound insulation and absorption. The lineaCube is completely transparent, but can also be combined with closed wall panels, slats or privacy glass.



# design



lineaCube



The sustainable lineaCube can be flexibly arranged as required. You can select the desired dimensions depending on the space and function. There is considerable flexibility in terms of dimensions:

- Unlimited length
- Width up to 4 meters / 13' 1 31/64"
- Height up to 3 meters / 9' 10 7/64"



# features & benefits

The ceiling of the lineaCube is flush mounted on the double-glazing. The flush glazing extends throughout. The absence of vertical profiles, even at the corners, makes the lineaCube completely transparent.

- Maximum sound insulation and absorption
- Sleek, steel Maars ceiling construction
- Integration of double-glazed designer door
- Can be placed flexibly in any surroundings
- Cradle to Cradle Silver certification





■ LED lighting

■ Suspension rail

■ Ventilation (discharge)

■ Ventilation (supply)



Whiteboard panels



Media wall



Integrated  
suspension rail

# functionality is a choice

Several options are available to add extra functionality to the sustainable lineaCube. These options include:

- Technology incorporated in the wall
- Direct lighting; spotlights or pendant lights
- Integrated sprinkler, fire alarm and/or motion detectors
- Integral suspension rail for accessories



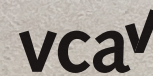
# core®

At Maars, you'll find multiple Room-in-Room options. Core is optimally responding to the changing way we work and collaborate. With the goal of giving employees a safe, enjoyable and efficient place to work, consult, connect, perform and create. Core allows you to shape the new workplace in the dimensions, design, style and finish you desire.

Core can be quickly and flexibly integrated into any holistic wall design plan. It therefore serves as the Core for your office, showroom, practice or production. You can provide Core with any finish you like: modern, stylish, abstract, surreal, warm, efficient, connecting, quiet, relaxing, inspiring, productive. This will ensure the optimal implementation of a workplace where people are focused, healthy and can concentrate. Where they meet, discuss and relax. Thanks to outstanding design, high-quality raw materials and innovative production methods.

# committed to circularity

For Maars, the well-being of people in any space is essential. We are always looking for sustainable, responsible solutions and we are constantly researching new production techniques. Reduce, reuse and recycle are firmly rooted in our business philosophy: from eco-friendly coatings to CO<sub>2</sub> offsets and the 5S 'lean manufacturing' methodology. Our products help improve your BREEAM and LEED scores. We have established an integrated operational management system for all critical quality, environmental and safety processes in order to have full control over our quality, environmental and health & safety policies. By scrutinizing the entire production process, we can be more efficient in terms of production while reducing energy consumption. Maars' ongoing commitment to innovation and circularity has been recognized with a Cradle to Cradle Bronze certificate for all our wall systems and ISO-9001 / ISO-14001 certification. (Be sure to ask about our certified products.)



lineaCube

# create and design interiors beyond your imagination

Maars 4D provides you with intelligent, highly visual and intuitive space planning software to make specifying and selling products easier. Maars 4D enables you to create realistic visualization, including a flythrough of your future space. This allows you to provide your customer a unique experience before you have even started the installation.



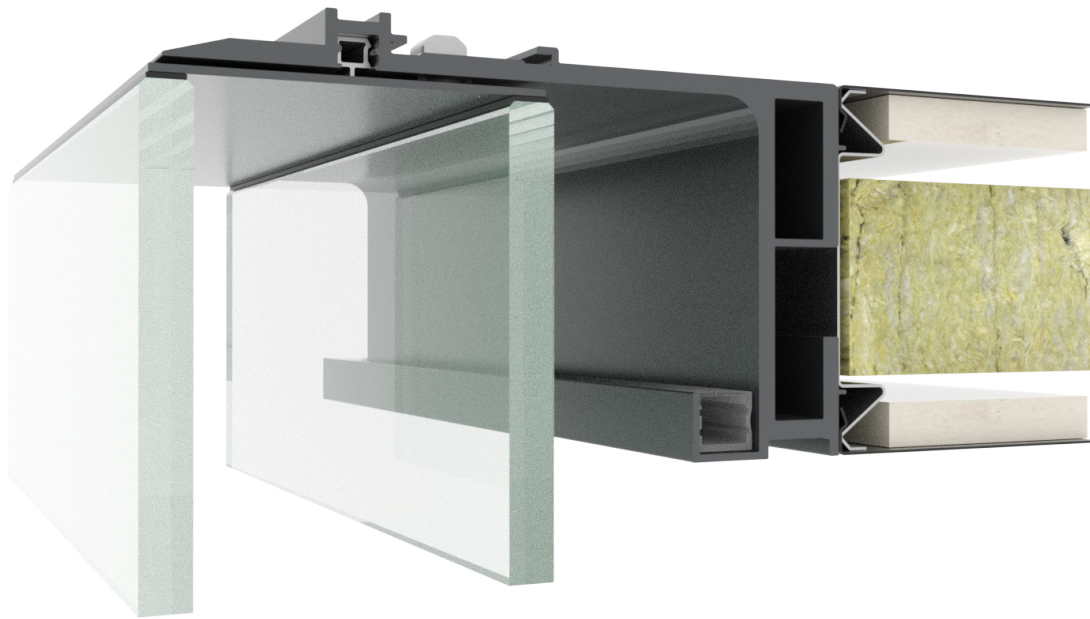
Rendered with maars 4D software



**maars 4D**

visit [www.maarslivingwalls.com](http://www.maarslivingwalls.com) to learn the possibilities

# great performance, unique details



Supportive glass construction  
through ring anchor and lalinea wall

lineaCube

# technical specifications

---

## MODULARITY FOR CUSTOMIZED SOLUTIONS

There are endless variations in the layout of the lineaCube. From single-person offices to consulting rooms with separate compartments. There is considerable flexibility in terms of dimensions:

- Unlimited length
  - Width up to 4 meters / 13' 1 31/64"
  - Height up to 3 meters / 9' 10 7/64"
- 

## ACOUSTIC FEATURES

- High sound insulation value up to 48 dB / 48 STC
- Very good sound absorption with reverberation of 0.5. This has been proven as an ideal value.

#### products

Styleline	lineaCube
Metaline	Doors
String <sup>2</sup>	Living Options
Panorama	M923.
Horizon	Core
lalinea	

#### expertise

Office	Airport
Care & Cure	Hospitality
Education	Industrial
Revitalisation	Automotive



**maars** LIVING WALLS®

Newtonweg 1, PO Box 1000  
3840 BA Harderwijk  
The Netherlands

T +31 (0)341 46 52 11  
[info@maars.nl](mailto:info@maars.nl)  
[www.maarslivingwalls.com](http://www.maarslivingwalls.com)